

I Believe

(based on the recording by Phil Wickham)

Chris Davenport, Jonathan Smith and Phil Wickham

Words and Music by

INTRO

C F Am G C

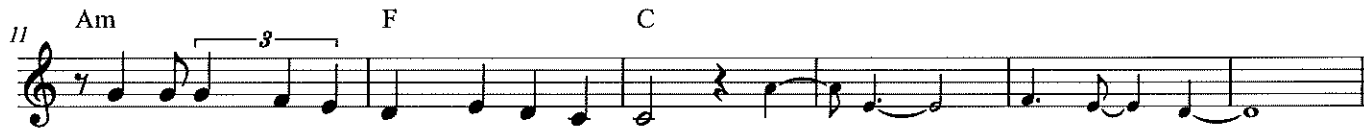
$\text{♩} = 133$



1. I be-lieve there is



one sal-va-tion, one door-way that leads to life. One re-demp-tion, one con-fes-sion,



I be-lieve in the name of Je-sus Christ.

VERSE 2

C



2. I be-lieve in the cru-ci-fix-ion. By His blood, I have been set free.



I be-lieve in the res-ur-rec-tion. Hal-le-lu-jah, His life is death's de-feat.

CHORUS 1a



All praise to God, the Fa-ther, all praise to Christ, the Son.

31 F C G Am F

All praise to the Ho-ly Spir-it, our God has o-ver-come. The King who

C G Am G F C/E G C F

TURNAROUND

36 *2nd time to Coda*

was and is and ev-er-more will be. In Je-sus' might-y name, I be-lieve.

Am G C

VERSE 3

42

3. I be-lieve in the hope of heav-en,

C

47

He's pre-par-ing a place for me. Far be-yond what hearts i-mag-ine, ears have heard or

F C

VERSE 4

52

eyes have seen. 4. I be-lieve that day is com-ing, He's re-turn-ing to claim His bride.

Am Gsus F C

57

Light the al-tar, keep it burn-ing, see the Lamb who rose a roar-ing Lion.

F C/E G F Am Gsus C

INSTRUMENTAL

62 *D.S. al Coda* *Coda* C

Je - sus' might - y name, I be - lieve.

68 C/E F Am Gsus C C/E

No, I'll nev - er be a -

BRIDGE

F Am G C C/E

- shamed of the gos - pel of Je - sus Christ. How could I ev - er walk a -

77 F Am G C C/E

- way from the One who saved my life? No, I'll nev - er be a

81 C C/E F Am G C

No, I'll nev - er be a - shamed of the gos - pel of Je - sus Christ.

85 C/E F Am G

How could I ev - er walk a - way from the One who saved my life?

CHORUS 1b

C C

All praise to God, the Fa-ther, all praise to Christ, the Son. All praise to the

95 N.C. F C G

Ho-ly Spir-it, our God has o-ver-come. The King who was and is and ev-er-more will

CHORUS 2

101 Am G F G C C/E F

be. In Je-sus' might-y name, I be-lieve. All praise to

107 C G Am F C

God, our Fa-ther, all praise to Christ, the Son. All praise to the Ho-ly Spir-it,

112 G Am F C G Am

our God has o-ver-come. The King who was and is and ev-er-more will be. In

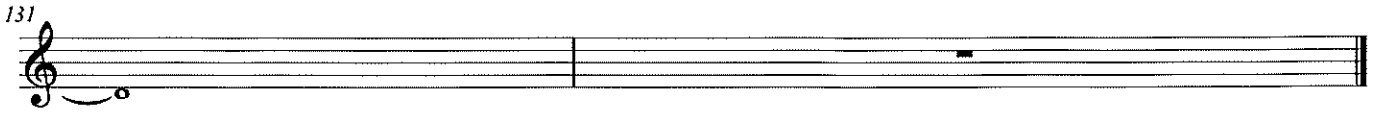
118 F G Am C/E F G

Je-sus' might-y name, I be-lieve. In Je-sus' might-y name, I be-

OUTRO

C F Am G C F Am G

- lieve.



131

The Way

(based on the recording by Pat Barrett)

Words and Music by
Daniel Bashta, Ben Smith and Pat Barrett

VERSE 1

$\text{♩} = 80$

B5 Bsus

Through ev-e-ry bat-tle, through ev-e-ry heart-break, through ev-e-ry

3 B Bsus B

cir-cum-stance, I be-lieve that You are my for-tress. Oh, You are my

CHORUS

6 Bsus G#m7 E2 B E2

por-tion. You are my hid-ing place. Oh, I be-lieve You are the Way, the Truth,

11 G#m7 E2 B E2 G#m7

the Life. I be-lieve You are the Way, the Truth, the Life.

VERSE 2

16 E2 B Emaj9

I be-lieve. 2. Through ev-e-ry bless-ing, through ev-e-ry prom-ise, through ev-e-ry

19 G#m7 Emaj9 B Emaj9

breath I take, I be-lieve that You are pro-vid-er. You are pro-tec-tor. You are the

CHORUS

23 G#m7 Emaj9 B E2 G#m7

One I love. I be-lieve You are the Way, the Truth, the Life.

28 E2 B E2 G#m7 E2

I be-lieve You are the Way, the Truth, the Life. I be-lieve You are.

INSTRUMENTAL

BRIDGE 1a

B Bsus B Bsus B

It's a new ho-ri-zon,

38 Bsus B Bsus

and I'm set on You. And You meet me here to-day with mer-cies that are new.

41 B Bsus B

All my fears and doubts, they can all come, too, be-cause they can't stay long

BRIDGE 1b

44 Bsus G#m7 Emaj9

when I'm here with You. It's a new ho-ri-zon, and I'm set on You.

47 B F#sus G#m7

And You meet me here to-day with mer-cies that are new. All my fears and doubts,

50 Emaj9 B F#sus

they can all come, too, be-cause they can't stay long when I be-lieve You are

CHORUS

B E2 G#m7 E2 B

the Way, the Truth, the Life. I be-lieve You are the Way,

BRIDGE 1b

58 E2 G#m7 E2 G#m7

the Truth, the Life. I be-lieve You are. It's a new ho-ri-zon,

62 Emaj9 B F#sus

and I'm set on You. And You meet me here to-day with mer-cies that are new.

65 G#m7 Emaj9 B

All my fears and doubts, they can all come, too, be-cause they can't stay long

CHORUS

68 F#sus B E2 G#m7 E2

when I be-lieve You are the Way, the Truth, the Life. I be-lieve You are

73

B E2 G4m7 E2

ENDING

B

the Way, the Truth, the Life. I be-lieve You are.

78

E/B B E/B (repeat as desired) B

E/B B E/B (repeat as desired) B

There Is One Gospel

(as published by CityAlight Music)

Words and Music by
Jonny Robinson and Rich Thompson

VERSE 1, 2 & 3

$\text{♩} = 150$ B E B F#

There is one Gos-pel on which I stand for all e - ter - ni - ty. It
There) is one Gos-pel to which I cling, all else I count as loss. For
There) is one Gos-pel where hope is found, the emp-ty tomb still speaks. For

5 B/D# E B/F# F# B

is my sto - ry, my Fa - ther's plan, the Son has res - cued me.
there, where jus - tice and mer - cy meet, He saved me on the cross.
death could not keep my Sav - iour down, He lives and I am free.

9 E B E B G#m F#

Oh, what a Gos - pel, oh what a peace. My high - est joy and my deep - est need.
No more I boast in what I can bring, no more I car - ry the weight of sin.
Now on my Sav - iour I fix my eyes, my life is His and His hope is mine.

13 B C#m7 B/D# E B F#

1, 2

Now and for - ev - er, He is my light. I stand in the Gos-pel of Je - sus
For He has brought me from death to life. I stand in the Gos-pel of Je - sus
For He has prom - ised I too will rise. I stand in the Gos-pel of

TURNAROUND

B5 E G#m7 E F# B C#m7 E2

3

INSTRUMENTAL

Christ.
Christ.

There Je - sus
There Christ.

VERSE 4

24 G \sharp m7 F \sharp E E B

And in this Gos-pel, the church is one, we

29 B/D \sharp E B/F \sharp F \sharp B

do not walk a - lone. We have His Spir-it as we press on to lead us safe-ly home.

35 E/B B E/B B G \sharp m F \sharp

And when in glo-ry still I will sing of this old sto-ry that res-cued me.

39 B C \sharp m7 B/D \sharp E B F \sharp B

Praise to my Sav-iour, the King of life. I stand in the Gos-pel of Je-sus Christ.

ENDING

B B/D \sharp E B E B G \sharp m F \sharp

And when in glo-ry still I will sing of this old sto-ry that res-cued me.

47 B C \sharp m7 B/D \sharp E B F \sharp B

Praise to my Sav-iour, the King of life. I stand in the Gos-pel of Je-sus Christ.

51

C#m7 B/D# E B F# G#m

Praise to my Sav-iour, the King of life. I stand in the Gos-pel of Je-sus Christ. I

OUTRO

55

E B F# B5 E G#m7 E B

stand in the Gos-pel of Je-sus Christ.

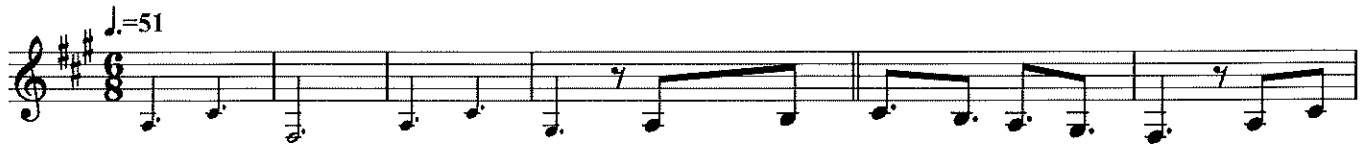
Jesus Only Jesus

(based on the recording by Legacy Nashville, feat. Brian Nhiru & Gracie Binion)

Words and Music by
Bede Benjamin-Korporaal, Baily Deanna Hager and Brian Nhiru

INTRO

F#m A D F#m A E



1. They could threat-en me with fire, send their

VERSE 1

F#m A D



7 ar-mies all a-round, feed me to the li-ons, but I will nev-er bow. We're not

F#m A E F#m A D E A



13 here to please the mass-es. There's no room for com-pro-mise. Try to tame our

F#m A D F#m A E F#m A



CHORUS 1

18 D E A F#m7 A D2 F#m7 A



pas-sion, but we will nev-er bow. Je-sus, on-ly Je-sus, the way, the truth, the

24 E(4) F#m7 A D2 E(4) A



life. Je-sus, on-ly Je-sus, Christ and Christ cru-ci-fied. 2. We will

VERSE 2

F#m A D F#m A Esus F#m A D

suf-fer for the Gos-pel. We for-sake our earth-ly crowns, lay down ev-'ry i - dol. To

36 E(4) A F#m A D F#m A

on-ly one we bow. We will preach the name of Je - sus; not o - pin-ions, just the truth.

41 Esus F#m A D E(4) A Esus E

Un-a-shamed and filled with bold-ness, to on-ly one we bow.

CHORUS 1 & 2

F#m7 A D2 F#m7 A E(4) F#m7 A D2

Je-sus, on-ly Je - sus, the way, the truth, the life. Je-sus, on-ly Je - sus,
 Je-sus, on-ly Je - sus, be - gin - ning and the end.

53 (1,3) E(4) A F#m7 A D2 E(4) A Fine

Christ and Christ cru-ci-fied. Je-sus, on-ly Je - sus, raised to life a - gain.

BRIDGE 1a

59 Asus A Asus A

On-ly one, one King, one God. On-ly one,

BRIDGE 1b

65 A A/C#

one Lord, one throne. On-ly one wor-thy to be praised. On-ly one,

Detailed description: This musical staff begins at measure 65. It features a treble clef and a key signature of two sharps (F# and C#). The melody consists of eighth and quarter notes. Above the staff, the chord 'A' is indicated above the first two measures, and 'A/C#' is indicated above the final measure. The lyrics are written below the staff.

71 D2 Esus D2/F# A/C# D2 A

one King, one God. On-ly one, one Lord, one throne. On-ly one wor-thy to be praised.

Detailed description: This musical staff begins at measure 71. It features a treble clef and a key signature of two sharps. The melody consists of quarter and eighth notes. Above the staff, the chords 'D2', 'Esus', 'D2/F#', 'A/C#', 'D2', and 'A' are indicated above their respective measures. The lyrics are written below the staff.

77 Esus D.S. al Fine

Detailed description: This musical staff begins at measure 77. It features a treble clef and a key signature of two sharps. The melody consists of a few notes with a long, sweeping slur over them. Above the staff, the chord 'Esus' is indicated above the first measure, and 'D.S. al Fine' is written at the end of the staff.