

# Battle Belongs

(based on the recording by Phil Wickham)

Words and Music by  
Phil Wickham and Brian Johnson

## INTRO

C

$\text{♩} = 81$



## VERSE

Csus C

C

When all I see is the bat-  
2. And if You are for



- tle, You see my vic - t'ry.  
me who can be a - gainst me?

When all I see is the moun-  
For, Je - sus, there's noth -



- tain, You see a moun - tain moved.  
- ing im - pos - si - ble for You.

And as I walk through the shad-  
When all I see are the ash -



- ow, Your love sur - rounds me.  
- es, You see the beau - ty.

There's noth - ing to fear  
When all I see is a cross,

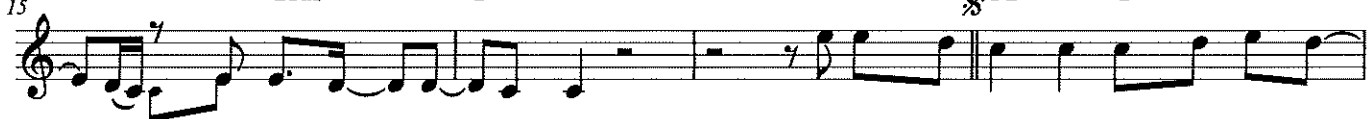
## CHORUS

Gsus

C

$\frac{3}{4}$  F2

C



now for I am safe with You.  
God, You see the emp ty tomb.

So when I fight, I'll fight on my knees



with my hands lift - ed high, O God, the bat - tle be - longs to You. And ev - 'ry

22 F2 C G Am7 F2 C Last time to Coda  $\Phi$  G

fear I lay at Your feet, I'll sing through the night, O God, the bat-tle be - longs to You.

**TURNAROUND**

C Csus C G C

longs to You.

**BRIDGE**

F C Gsus

(God.) (An) Al - might - y For - tress, You go be - fore us. Noth - ing can

33 Am7 Gsus F C

stand a-against the pow-er of our God. You shine in the shad - ows, You win ev-'ry bat-

36 Gsus Am7 Gsus Am7 Gsus

- tle. Noth-ing can stand a-against the pow-er of our stand a-against the pow-er of our

39 F2 G N.C. G Coda Am7 F2 C

*D.S. al Coda*  $\Phi$  **TAG**

God. So when I longs to You. Oh God, the bat-tle be -

**OUTRO**

43

G C Csus C

- longs to You.



# Desert Song

## VERSE 1

$\text{♩} = 120$

Bm A G D Bm A

1. This is my prayer in the des-ert, when all that's with-in me feels

4 G D Bm A G D Bm A

dry. This is my prayer in my hung-er and need. My God is the God who pro-

## VERSE 2 & 3

8 G Bm A G D Bm A

-vides. 2. This is my prayer in the fi-re, in weak-ness or tri-al or  
3. This is my prayer in the bat-tle, when tri-umph is still on its

12 G D Bm A G D

pain. There is a faith proved of more worth than gold. So  
way. I am a con-q'ror and co-heir with Christ, so

## CHORUS

15 Bm D/F# G G  $\text{♯}D$

re-fine me, Lord, through the flame. I will bring praise. I will bring  
firm on His prom-ise I'll stand.

19 A G D A/C# A

praise. No weap-on formed a-against me shall re-main. I will re-joice. I will de-

**INSTRUMENTAL 1**

(1)  
 Bm G D/A A Bm A G D Bm A

-clare, God is my vic - to-ry, and He is here.

2,3  
 G G D A/C# A

a-gainst me shall re - main. I will re-joice. I will de -

**BRIDGE**

Bm G D/A A Bm D  
 2nd time to Coda

-clare, God is my vic - to-ry, and He is here. All of my life, in

37 Bm A

ev-'ry sea - son, You are still God. I have a rea - son to sing. I

41 G D D D  
 1,2,3 | 4  
 D.S. al Coda

have a rea-son to wor - ship. All ship. I will bring

**INSTRUMENTAL 2**

Bm A G D Bm A G Bm A  
 Coda

45

here.

**VERSE 4**

4. This is my prayer in the

51

har-vest, when fav-our and prov-i - dence flow. I know I'm filled to be

55

emp - tied a - gain. The seed I've re - ceived I will sow.

# What A Friend We Have In Jesus

Charles Crozat Converse | Joseph Medlicott Scriven | Nathan Drake

Key - D | Tempo - 80 | Time - 4/4

## INTRO

D G D A

## VERSE 1

D G  
What a friend we have in Jesus

D A  
All ours sins and griefs to bear

D G  
What a privilege to carry

D A D  
Everything to God in prayer

A D  
O what peace we often forfeit

G D A  
O what needless pain we bear

D G  
All because we do not carry

D A D  
Everything to God in prayer

## INTERLUDE

D G D A

## VERSE 2

D G  
Have we trials and temptations

D A  
Is there trouble anywhere

D G  
We should never be discouraged

D A D  
Take it to the Lord in prayer

A D  
Can we find a friend so faithful

G D A  
Who will all our sorrows share

D G  
Jesus knows our every weakness

D A D  
Take it to the Lord in prayer

## INTERLUDE

### VERSE 3

**D** **G**  
Are we weak and heavy laden  
**D** **A**  
Cumbered with a load of care  
**D** **G**  
Precious Savior still our refuge  
**D** **A** **D**  
Take it to the Lord in prayer  
**A** **D**  
Do thy friends despise forsake thee  
**G** **D** **A**  
Take it to the Lord in prayer  
**D** **G**  
In His arms He'll take and shield thee  
**D** **A** **D**  
Thou will find a solace there

### INTERLUDE

**CCLI Song # 7197491**

© 2022 Reawaken Hymns

For use solely with the SongSelect® Terms of Use, All rights reserved. [www.ccli.com](http://www.ccli.com)

CCLI License # 73737

# Sweet Hour Of Prayer

www.praisecharts.com/28961  
Casting Crowns / Casting Crowns

Key: A · Tempo: 116 · Time: 3/4

## Intro

(A5) // | E(4)/G# // | F#m7 // | E(4)/G# // |  
Dma7 // | E(4)/G# // | D2 // | E7sus4 //

## Verse 1

A5 D2  
Sweet hour of prayer, sweet hour of prayer  
A E  
That calls me from a world of care  
A D2  
And bids me at my Father's throne  
A E A5 | A5  
Make all my wants and wishes known

## Chorus 1

A D A  
In seasons of dis - tress and grief  
A D A E | E  
My soul has often found re - lief  
A5 D2  
And oft escaped the tempter's snare  
A E A5  
By thy return sweet hour of prayer

## Intro

## Verse 2

A5 D2  
Sweet hour of prayer, sweet hour of prayer  
A E  
May I thy conso - lation share  
A D2  
Till from Mount Pisgah's lofty height  
A E A5 | A5  
I view my home and take my flight

## Chorus 2

A D A  
This robe of flesh I'll drop and rise  
A D A E | E  
To seize the ever - lasting prize  
A5 D2  
And shout while passing through the air  
A E A5  
Fare - well, farewell, sweet hour of prayer

## Intro

## Instrumental

A5 // | // // | D2 // | // // | A // |  
// // |  
E // | // // | A // | // // | D2 // | // // |  
A // | // // | E // | A5 // | // //

## Chorus 2

## Outro

(A5) // | E(4)/G# // | F#m7 // | E(4)/G# // |  
Dma7 // | E(4)/G# // | D2 // | Esus7 // |  
A // |

© My Refuge Music, Be Essential Songs (Admin. by Essential Music Publishing LLC). CCLI Song No. 7040165. CCLI No. 1653187.  
Unauthorized distribution is prohibited. Words and music by Mark Hall / William Bradbury.

