

I Will Follow

Words and Music by
Chris Tomlin, Jason Ingram
and Reuben Morgan

♩=96

INTRO

C#m

A/C#



Where You go, I'll go; Where You stay, I'll stay;

3

E/B

B

C#m⁷



When You move, I'll move. I will fol - low. Oh,

VERSE

6

A²

E

B⁽⁴⁾

A



oh, oh,

1. All Your ways are good,
2. Light in - to the world,

10

C#m⁷

B⁽⁴⁾

E²

B/D#



all Your ways are sure; I will trust in You a - lone.
Light in - to my life I will live for You a - lone.

13

A

C#m⁷

B⁽⁴⁾



High - er than my sight, high a - bove my life; I will
You're the One I seek, know-ing I will find all I

16 E^2 B/D^\sharp A $B^{(4)}$ $C^\sharp m^7$ **CHORUS**

trust in You _ a - lone. _ Where You go, I'll _ go; _
 need in You _ a - lone. _ In You a - lone.

20 A^2 E $B^{(4)}$

_ Where You stay, I'll _ stay; _ When You move, I'll _ move. _ I will fol - low _ You. .

23 $C^\sharp m^7$ A^2 E Last time to Coda

_ Whom You love, I'll _ love; _ How You serve, I'll _ serve; _ If this life I _ lose. .

INTERLUDE

26 $B^{(4)}$ $C^\sharp m^7$ A^2

_ I will fol - low _ You, _ yeah. _ I will fol - low _ You. .

BRIDGE

29 E $B^{(4)}$ $Amaj^9$ E B

_ yeah. _ In You, there's life ev - er - last - ing.

33 $Amaj^9$ E B $Amaj^9$

In You, there's free - dom for my _ soul. In You, there's

36 E B $Amaj^9$ E B D.S. al Coda

joy, un - end - ing _ joy; _ And I will fol - low.

39 \oplus Coda $B^{(4)}$ CHORUS $C\sharp m^7$

— I will fol - low. _ Where You go, I'll _ go; _

41 A^2 E $B^{(4)}$

— Where You stay, I'll _ stay; _ When You move, I'll _ move. _ I will fol - low _ You. .

44 $C\sharp m^7$ A^2 E

— Whom You love, I'll _ love; _ How You serve, I'll _ serve; _ If this life I _ lose. .

47 ENDING $B^{(4)}$ $C\sharp m^7$ A^2

— I will fol - low _ You, _ yeah. _ I will fol - low _ You. .

50 E $B^{(4)}$ $C\sharp m^7$

— yeah. _ I will fol - low _ You, _ yeah. _

53 A^2 E $B^{(4)}$

— I will fol - low _ You, _ yeah. _

Step By Step (Live)

www.praisecharts.com/84774
Worship Circle / Todd Fields

Key: E · Tempo: 107 · Time: 4/4
Page 1 of 2

Intro

E / / / | B(4)/D# / / / | C#m / / / | A / / / |

Verse 1

E B(4)/D#
Sometimes the night was beautiful
E B(4)/D#
Sometimes the sky was so far away
C#m A B(4)
Sometimes it seemed to stoop so close
(G#m7)
You could touch it but your heart would break
G#m7 A
Sometimes the morning came too soon
G#m7 A
Sometimes the day could be so hot
C#m7 B(4) A
There was so much work left to do
F#m
But so much You'd already done

Verse 1

E B/D#
O God You are my God
A B E
And I will ever praise You
E B/D#
O God You are my God
A B E
And I will ever praise You
C#m7 B
And I will seek You in the morning
A F#m7
And learn to walk in Your ways
E B/D#
And step by step You'll lead me
A B E
And I will follow You all of my days

Intro

Verse 2

E B/D#
Sometimes I think of Abraham
E B/D#
How one star he saw had been lit for me

C#m A B
He was a stranger in this land
E/G#
And I am that, no less than he
E/G# A
And on this road to righteousness
G#m7 A
Sometimes the climb can be so steep
C#m B A
I may falter in my steps
F#m
But never be - yond Your reach

Chorus 2

E B/D#
O God You are my God
A B E
And I will ever praise You
E B/D#
O God You are my God
A B E
And I will ever praise You
C#m7 B
And I will seek You in the morning
A F#m7 / / /
And learn to walk in Your ways
E B/D#
And step by step You'll lead me
A B (E)
And I will follow You all of my days

Tag (2x)

E B/D#
And step by step You'll lead me
A B E
And I will follow You all of my days

Intro

Bridge 1

E B(4)/D# A
When I don't have strength, You will carry me
E B(4)/D# C#m A
If I lose my way, You will never leave
E B(4)/D# A
If I don't have strength, You will carry me
E B(4)/D# A E
If I lose my way, You will never leave

Step By Step (Live)

www.praisecharts.com/84774
Worship Circle / Todd Fields

Key: E · Tempo: 107 · Time: 4/4
Page 2 of 2

Bridge 2

E B(4)/D# A
When I don't have strength, You will carry me

E B(4)/D# C#m E
If I lose my way, You will never leave

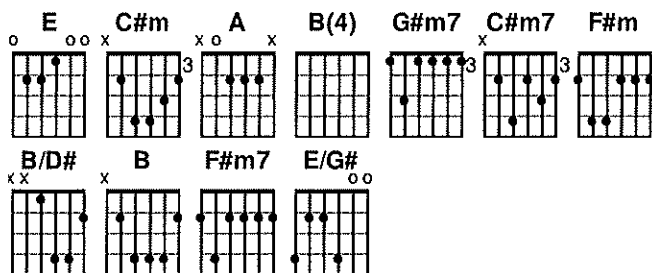
E B(4)/D# C#m A
If I lose my way, You will never leave

E B(4)/D# C#m E
If I lose my way, You will never leave

E B(4)/D# C#m A
If I lose my way, You will never leave

E B(4)/D# C#m E
If I lose my way, You will never leave

© 1991 Kid Brothers Of St. Frank Publishing, Universal Music -
Brentwood Benson Publishing (Admin. by Brentwood-Benson Music
Publishing, Inc.). CCLI Song No. 696994. CCLI No. 1653187.
Unauthorized distribution is prohibited.



More Like Jesus

(based on the recording by Passion)

Words and Music by
Brooke Ligertwood, Scott Ligertwood,
Kristian Stanfill and Brett Younker

INTRO



VERSE 1



1. You came to the world You cre - at - ed, trad - ing Your crown for a cross.



You will - ing - ly died, Your in - no - cent life paid the cost.

VERSE 2



2. Count - ing Your sta - tus as noth - ing, the King of all kings came to serve,

CHORUS 1a



wash - ing my feet, cov - er - ing me with Your love. If more of You means



less of me, take ev - 'ry - thing. Yes, all of You is all I need. Take

CCLI Song # 7105732

© 2018 sixsteps Music | worshiptogether.com songs | SHOUT! Music Publishing Australia

For use solely with the SongSelect® Terms of Use. All rights reserved. www.ccli.com

CCLI License # 73737

TURNAROUND

31 E2 B/E E2 B E B/E E2

ev - 'ry - thing.

VERSE 3

B Emaj7

3. You are my life and my treas - ure, the One that I can't live with - out.

41 G#m F#(4) E F#sus

Here at Your feet, my de - si - res and dreams, I lay down.

CHORUS 1a

45 G#m F#(4) E B

Here at Your feet, my de - si - res and dreams I lay down. If more of You means

50 B/D# E2 B B/D# E B/E

less of me, take ev - 'ry - thing. Yes, all of You is all I need. Take ev - 'ry -

BRIDGE

56 E2 G#m F# B Emaj7

thing. If thing. Oh Lord, change me like on - ly You can.

61 F#sus G#m7 E E2(#4) F#sus F#

Here with my heart in Your hands. Fa - ther, I pray: make me more like Je - sus. This

66 B Emaj7 F#sus

world is dy - ing to know who You are. You've shown us the way to Your

70 1 2

G#m7 E2 E2(#4) F#sus F# F#sus F# E2 E2(#4)

heart. So, Fa - ther, I pray: make me more like Je - sus. Oh, Je - sus, more like

76 F#sus F# E2 E2(#4) F#sus F# E2 B B/D#

Je - sus, more like Je - sus, Lord. Oh

INTERLUDE

83 E2 F#sus G#m7 B/D# E B/E E2

Lord, oh Lord, Fa - ther, I pray, Fa - ther, I pray: make me more like Je - sus. If

CHORUS 1b

more of You means less of me, take ev - 'ry - thing. Yes, all of You is

94 Musical score for the lyrics "all I need. Take ev - 'ry - thing. If thing." The score is in treble clef with a key signature of three sharps (F#, C#, G#). The melody consists of eighth and quarter notes. Chords are indicated above the staff: B/D# (first measure), E (second measure), B/E (third measure), E2 (fourth measure), E2 (fifth measure), and B (sixth measure). The lyrics are written below the staff, aligned with the notes. The score ends with a double bar line.

He Leadeth Me chords by Misc Praise Songs

[Verse 1]

B **E**
He leadeth me! O blessed thought!
B **F#**
O words with heavenly comfort fraught!
B **E**
What-e'er I do, wher-e'er I be,
B **F#** **B**
Still 'tis God's hand that lead-eth me.

[Chorus]

B **F#** **G#m** **E**
He leadeth me, He lead-eth me,
E **B** **F#**
By His own hand He leadeth me;
F# **B** **F#** **G#m** **E**
His faithful fol-lower I would be,
E **B** **F#** **B**
For by His hand He lead-eth me.

[Verse 2]

B **E**
Lord, I would clasp my hand in Thine,
B **F#**
Nor ever mur-mur nor repine;
B **E**
Con-tent, whatever lot I see,
B **G#m** **B** **F#7** **B**
Since 'tis my God that lead-eth me.

[Chorus]

B **F#** **G#m** **E**
He leadeth me, He lead-eth me,
E **B** **F#**
By His own hand He leadeth me;
F# **B** **F#** **G#m** **E**
His faithful fol-lower I would be,
E **B** **F#** **B**
For by His hand He lead-eth me.

[Verse 3]

B E
And when my task on earth is done,
B F#
When, by Thy grace, the victory's won,
B E
E'en death's cold wave I will not flee,
B G#m B F#7 B
Since God through Jordan lead-eth me.

[Chorus]

B F# G#m E
He leadeth me, He lead-eth me,
E B F#
By His own hand He leadeth me;
F# B F# G#m E
His faithful fol-lower I would be,
E B F# B
For by His hand He lead-eth me.

Wherever He Leads I'll Go

Words and Music by
B. B. McKinney

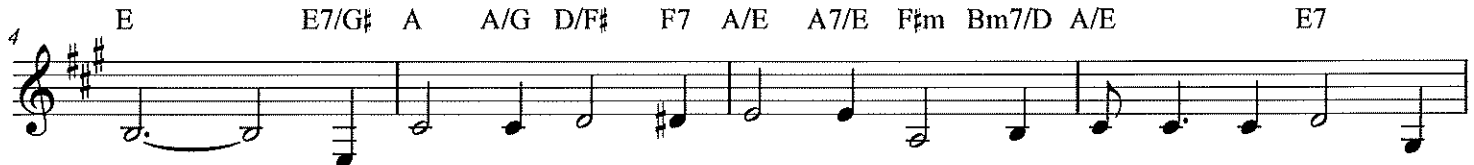
VERSE

♩ = 88

A E7/B A/C# D Bm7/D A/E F#m6 B7/F# B7



1. "Take up thy cross and fol - low Me," I heard my Mas - ter
2. He drew me clos - er to His side, I sought His will to
3. It may be through the shad - ows dim, or o'er the storm - y
4. My heart, my life, my all I bring to Christ who loves me



say; "I gave My life to ran - som thee, sur - ren - der your all to -
know, and in that will I now a - bide, wher - ev - er He leads I'll
sea, I take my cross and fol - low Him, wher - ev - er He lead - eth
so; He is my Mas - ter, Lord, and King, wher - ev - er He leads I'll

CHORUS



day." Wher - ev - er He leads I'll go, wher - ev - er He leads I'll go, I'll
go. _____
me. _____
go. _____



fol - low my Christ who loves me so, wher - ev - er He leads I'll go. _____