

# House Of The Lord

(based on the recording by Phil Wickham)

Words and Music by  
Phil Wickham and Jonathan Smith

♩=86

## INTRO

A A<sup>2</sup> A E<sup>sus</sup> D<sup>2</sup>



E<sup>sus</sup> A A<sup>2</sup> A E<sup>sus</sup>



D<sup>2</sup> E<sup>sus</sup>



1. We wor-

## VERSE 1

A



- ship the God who was. We wor - ship the God who is. We wor -

F#m E<sup>(4)</sup> D<sup>2</sup> A



- ship the God who ev - er-more will — be. He o - pened the pris - on doors. He part-

F#m E<sup>(4)</sup> D<sup>2</sup>



- ed the rag - ing sea. Our God, — He holds the vic - to - ry, — yeah.

## CHORUS 1

17 A E

There's joy in the house of the Lord. \_\_\_\_ There's joy in the house of the Lord to - day .

19 D<sup>2</sup> D/E

\_\_\_\_ And we \_\_\_\_ won't be qui - et. \_\_\_\_ We shout out Your praise. .

21 A E

\_\_\_\_ There's joy in the house of the Lord. \_\_\_\_ Our God is sure - ly in this \_

2nd time to Coda ⊕

## INTERLUDE 1

23 D<sup>2</sup> D/E A A<sup>2</sup>

\_\_\_\_ place. And we \_\_\_\_ won't be qui - et. \_\_\_\_ We shout out Your praise. Oh, oh,

26 A E<sup>sus</sup> D<sup>2</sup> E<sup>sus</sup>

oh, \_\_\_\_ we shout out Your praise. \_\_\_\_ 2. We sing \_

## VERSE 2

29 A

\_\_\_\_ to the God who heals. We sing \_\_\_\_ to the God who saves. We sing \_

31 F#m E<sup>(4)</sup> D<sup>2</sup>

\_\_\_\_ to the God who al - ways makes a \_\_\_\_ way. 'Cause He hung \_

33

A

Bm<sup>7</sup>

35

F#m

E<sup>(4)</sup>D<sup>2</sup>

D.S. al Coda

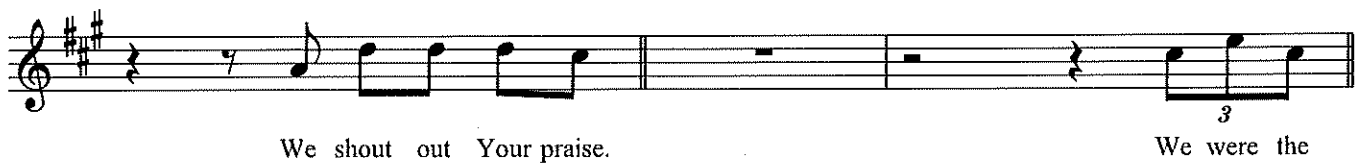


⊕ Coda

37

D/E

A



## BRIDGE 1a

40

A

E/A

A



43

E/A

A

F#m

D

A



## BRIDGE 1b

46

E

D

A



49

E/A

A

E/A

A

E/G#



52 F#m D A E D

-giv - en, ac - cept - ed, re - deemed by His grace. — Let the house of the Lord sing — praise. .

## INTERLUDE 2

55 A N.C.

— There is joy in this — house. — Oh —

59 A E<sup>(4)</sup>

— yeah, There is joy, there is joy!

62 D<sup>2</sup> N.C.

And we — won't be qui - et. — We're gon - na shout out Your praise! —

## CHORUS 2

64 A E

— There's joy in the house of the Lord. — There's joy in the house of the Lord to —

66 D<sup>2</sup> D/E A

- day. — We're gon-na shout out Your praise! — There is joy,

69 E D<sup>2</sup> D/E

there is joy sure - ly in this place. — We won't be qui - et. We shout out Your praise! —

## ENDING

72 A A<sup>2</sup> A E<sup>sus</sup> D<sup>2</sup>

— We shout out Your praise! — There is joy in this

75 E<sup>sus</sup> A A<sup>2</sup> A E<sup>sus</sup>

house, - there is joy in this house to - day! We shout out Your praise! .

78 D<sup>2</sup> E<sup>sus</sup>

— We shout out Your praise. .

80 A Bm<sup>7</sup> F<sup>#m</sup> E D

—

# The Family Of God

Words by  
William J. Gaither and Gloria Gaither

Music by  
William J. Gaither

## CHORUS

Musical notation for the Chorus, starting at measure 1. The key signature is one sharp (F#) and the time signature is 3/4. The melody is written on a treble clef staff. Chords are indicated above the staff: G, A9, F#m/A, A7, D7, C/D, D, D9, G, A9, F#m/A, A7. The lyrics are: "I'm so glad I'm a part of the fam - 'ly of God; I've been washed in the foun - tain, cleansed by His blood! Joint heirs with Je - sus as we trav - el this sod, for I'm part of the fam - 'ly, the fam - 'ly of God." The chorus ends with two endings: "1. You will" and "2. From the".

## VERSE

Musical notation for the Verse, starting at measure 12. The key signature is one sharp (F#) and the time signature is 3/4. The melody is written on a treble clef staff. Chords are indicated above the staff: G, D/G, G, D7, C/D, D7, G, C/G, G, D7, D13, D7, G, C/G. The lyrics are: "no - tice we say 'broth - er' and 'sis - ter' 'round here; It's be - cause we're a door of an orph - 'nage to the house of the King; No long - er an fam - 'ly and these folks are so near; When one has a heart - ache we out - cast, a new song I sing; From rags un - to rich - es, from the all share the tears, and re - joice in each vic - t'ry in this fam - 'ly so dear. weak to the strong; I'm not wor - thy to be here, but praise God, I be". The verse ends with a first ending bracket labeled "1".

34 (1) 2

G G C/G G *D.S. al Coda*

I'm so long! I'm so

37 D9 D13 D7 G C/G G

*Coda*

fam - 'ly of God. \_\_\_\_\_

# The Jesus Way

(based on the recording by Phil Wickham)

Words and Music by  
Phil Wickham and Jonathan Smith

## INTRO

♩ = 73    G    C/G    G    C/G    G    G    C/G

## VERSE 1 & 2

1. If you curse me, then I will  
(2. If you're) help - less, I will de-

6    G    Em7    C    Dsus    D

bless you.    If you hurt me,    I will for - give.    And if you  
fend you.    And if you're burd - ened,    I'll share the weight.    And if you're

9    G/B    C    D    Em    C    Dsus    G    C/G    G

hate me,    then I will love you.    I choose the Je - sus way.    2. If you're  
hope - less,    then let me show you there's

## 2

## CHORUS 1a

14    C    D    G    G/B    C    G

hope in the Je - sus way.    I fol - low Je - sus,    I fol - low Je - sus.    He wore my

18    D    Em7    D    C    G/B    Em7

sin, I'll glad - ly wear His name.    He is the treas - ure,    He is the an - swer.    Oh,

CCLI Song # 7217888

© Be Essential Songs | Cashagamble Jet Music | Phil Wickham Music | Simply Global Songs

For use solely with the SongSelect® Terms of Use. All rights reserved. www.ccli.com

CCLI License # 73737



**TURNAROUND****VERSE 3**

22 *Dsus D G Em C G C/G*  
*2nd time to Coda*

I choose the Je - sus way.

3. If you strike me, I will em-

26 *G D/F# Em7 C Dsus D G/B C*

brace you. And if you chain me, I'll sing His praise. And if you kill me, my home is

*D Em7 C D G G/B*  
*D.S. al Coda*

30 *D Em7 C D G G/B*  
 heav - en; for I choose the Je - sus way. I fol - low

*G Coda*  
 33

(way.)

And I choose sur -

**BRIDGE**

*C Em7 D G/B C Em7 D G/B*  
 ren - der. I choose to love. Oh, God, my Sav - ior, You'll al - ways be e - nough. I choose for-

39 *C Em7 D G/B C Em7 D G G/B*  
 give - ness. I choose grace. I choose to wor - ship, no mat - ter what I face. I choose the Je - sus

43 *C Em D G G/B C Em*  
 way. I choose the Je - sus way. I choose the Je - sus way. I choose the Je - sus

**CHORUS 1b**

46 *D C G D*  
 way. I fol - low Je - sus. I fol - low Je - sus. He wore my sin, I'll glad - ly wear

50

Em7 D C G/B Em7 Dsus D

His name. He is the treas - ure, He is the an - swer. Oh, I choose the Je - sus way.

1

54

(1) 2 TAG OUTRO

G G/B Dsus D Em G/B C D G

I fol - low I choose the Je - sus way. Oh, I choose the Je - sus way.

59

Em C G Em C G

# By Our Love

Words and Music by  
Christy Nockels

## VERSE



## INSTRUMENTAL

17 Am D/F# G D/F# D/A G D/F# D/A Em D/F# G D.C.

and they will know us by our love.

22 G D.S. al Coda

love. The time is

## ENDING

23 Am D/F# G D/F# D/A G D/F# D/A G

and they will know us by our love.


# The Blessing

(based on the recording by Kari Jobe, Cody Carnes & Elevation Worship | original key: B)

Words and Music by  
Chris Brown, Cody Carnes,  
Kari Jobe and Steven Furtick


## VERSE

♩ = 70    B $\flat$     E $\flat$ 2(no3)    B $\flat$



The Lord bless you and keep you, make his face shine up - on

4    F(4)    Gm7    E $\flat$ 2(no3)    B $\flat$     F(4)



you and be gra - cious to you. The Lord turn his face toward you and give you peace.

## CHORUS

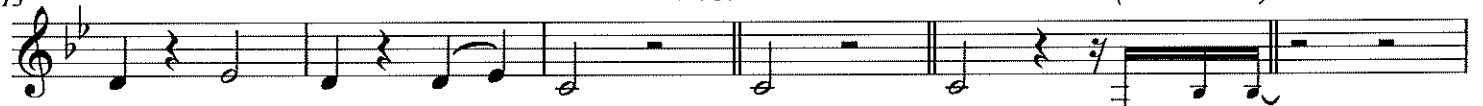
B $\flat$     B $\flat$ sus    Gm7    E $\flat$ 2(no3)    B $\flat$     F(4)    Gm7



A - - men, a - men, a - men. A - -

## INSTRUMENTAL


15    E $\flat$ 2(no3)    B $\flat$     F(4)    F(4)    F(4)    Gm7



men, a - men, a - men. men. men. (May his fa)

## BRIDGE

21    E $\flat$ 2(no3)    B $\flat$     F(4)    Gm7




May his fa - vor be up - on you and a thou-  
(May his pres) - ence go be - fore you and be - hind  
(In the morn) - ing, in the eve - ning, in your com-

CCLI Song # 7147007

© 2020 Capitol CMG Paragon | Kari Jobe Carnes Music | Worship Together Music | Writer's Roof Publishing | Music by Elevation Worship Publishing  
For use solely with the SongSelect® Terms of Use. All rights reserved. www.ccli.com


CCLI License # 73737

25 Eb2(no3) Bb




sand gen - er - a - tions and your fam - 'ly and your chil - dren and their chil -  
you and be - side you, all a - round you and with - in you. He is with  
ing and your go - ing, in your weep - ing and re - joic - ing, He is for

27 F(4) (repeat as desired) F(4) 1 2, 3, 5, 6




dren and their chil - dren. May his fa dren and their chil - dren. May his pres  
you, he is with you. In the morn

29 F(4) TAG Gm7 Eb2(no3)



you, he is for you. He is for you, he is for you, he is for you, he is for

32 Bb F(4) F(4) Eb2(no3) 1 2 D.S.



you, he is for you, he is for you. you.